



Government of India
Ministry of Earth Sciences
India Meteorological Department



Press Release
Date: 07th July, 2025
Time of Issue: 1330 hours IST

Subject: (i) Under the influence of Low pressure area over southwest Gangetic West Bengal & neighbourhood, heavy to very heavy rainfall likely to continue over central & adjoining east India during next 3-4 days with isolated extremely heavy rainfall (≥ 21 cm) over East Madhya Pradesh, Chhattisgarh, Vidarbha, interior Odisha today, the 07th July.
(ii) Heavy to very heavy rainfall activity likely to continue over Northwest India and along the West coast during next 4-5 days.

Realised weather during past 24 hours till 0830 hours IST of today, the 07th July, 2025 (Annexure II):

- ❖ Heavy to very heavy rainfall with isolated extremely heavy rainfall (≥ 21 cm) has been recorded over north Chhattisgarh and southeast Madhya Pradesh.
- ❖ Heavy to very heavy rainfall (7-20 cm) has been recorded at isolated places over Uttarakhand, East Rajasthan, Haryana, Assam & Meghalaya, Madhya Maharashtra, Gujarat state, Odisha, Jharkhand; Heavy rainfall (7-11 cm) at isolated places over Punjab, West Uttar Pradesh, West Madhya Pradesh, Vidarbha, Konkan, West Bengal, Kerala, Coastal & South Interior Karnataka.
- ❖ Thunderstorm accompanied with Squally/Gusty winds with speed 40-60 kmph over Tamil Nadu, Kerala, Karnataka, Coastal Andhra Pradesh & Yanam, Rayalaseema, Telangana, Madhya Maharashtra, Saurashtra & Kutch, West Uttar Pradesh, Marathwada, Andaman & Nicobar Islands, Himachal Pradesh, Madhya Pradesh and Konkan.

For more details of realised weather, kindly refer [Annexure I](#),

i. Weather Systems, Forecast and Warnings (refer to Annexure II & III):

- ❖ The Low-Pressure area over Gangetic West Bengal & neighbourhood lay over southwest Gangetic West Bengal & neighbourhood at 0830 hrs IST of today, the 07th July 2025. It is likely to move slowly west-northwestwards across Jharkhand and north Chhattisgarh during next 2 days.
- ❖ Monsoon trough at mean sea level runs near normal of its position.
- ❖ A trough runs from south Rajasthan to the above cyclonic circulation associated with the Low-Pressure area over southwest Gangetic West Bengal & neighbourhood in lower & middle tropospheric levels tilting southwards with height.
- ❖ An upper air cyclonic circulation lies over north Haryana & adjoining Himachal Pradesh in lower tropospheric levels.
- ❖ An off-shore trough at mean sea level runs along south Gujarat to north Kerala coasts.

Under the influence of these systems, the following weather is likely:

East & Central India:

- ✓ Extremely heavy rainfall (≥ 21 cm) very likely at isolated places over East Madhya Pradesh, Chhattisgarh and Vidarbha, interior Odisha on 07th July.
- ✓ Isolated heavy rainfall very likely to continue over Madhya Pradesh during 07th-13th; Vidarbha, Chhattisgarh during 07th-10th; Gangetic West Bengal, Jharkhand, Odisha on 07th & 08th and Sub-Himalayan West Bengal & Sikkim on 07th, 09th, 12th & 13th July with very heavy rainfall over Madhya Pradesh during 07th-10th; Gangetic West Bengal, Jharkhand on 07th and Odisha on 07th & 08th; Vidarbha on 08th & 09th; Chhattisgarh on 08th July.
- ✓ Light/moderate rainfall at most/many places accompanied with thunderstorm, lightning & gusty winds speed reaching 30-40 kmph likely over the region during next 7 days with intense cloud to ground lightning over Madhya Pradesh, Jharkhand and Chhattisgarh today.

Northwest India:

- ✓ Isolated **heavy rainfall** likely over Uttarakhand, East Rajasthan during 07th-13th, Jammu-Kashmir, Himachal Pradesh, Punjab, Haryana Chandigarh, West Uttar Pradesh during 07th-10th, West Rajasthan during 07th-09th; East Uttar Pradesh during 08th-10th July with **very heavy rainfall over Uttarakhand, East Rajasthan during 07th-10th; Punjab, Haryana, Chandigarh on 07th& 08th July.**
- ✓ Light/moderate rainfall at most/many places accompanied with thunderstorm, lightning likely over western Himalayan region and some/many places over the plains during next 7 days.

West India:

- ✓ **Heavy to very heavy rainfall** likely at isolated places over Konkan & Goa, Ghat areas of Madhya Maharashtra, during next 7 days; Gujarat state on 07th and **heavy rainfall** over Gujarat Region during 07th-09th; Marathwada on 08th & 09th; Saurashtra & Kutch on 12th & 13th July.
- ✓ Light/moderate rainfall at most/many places accompanied with **thunderstorm, lightning & gusty winds speed reaching 30-40 kmph** likely over the region during next 7 days.

Northeast India:

- ✓ Light/moderate rainfall at most places accompanied with **thunderstorm, lightning** likely to continue over Northeast India during next 7 days.
- ✓ Isolated heavy rainfall very likely over Assam & Meghalaya, Nagaland, Manipur, Mizoram & Tripura during 07th-13th; Arunachal Pradesh during 11th-13th **with very heavy rainfall** over Meghalaya on 07th July.

South Peninsular India:

- ✓ Isolated **heavy rainfall** likely over Coastal Karnataka, Kerala & Mahe during 07th-13th and isolated **heavy to very heavy rainfall** over Telangana during 07th-09th July.
- ✓ **Strong surface winds** (speed reaching 40-50 kmph) very likely over South Peninsular India during next 5 days.
- ✓ Light/moderate rainfall at many/some places over Kerala & Mahe, Lakshadweep, Karnataka, Telangana; isolated to scattered rainfall accompanied with isolated **thunderstorm, lightning** over Coastal Andhra Pradesh & Yanam, Telangana and Rayalaseema during next 7 days.

Hot & Humid Weather warning:

- ❖ **Hot & humid weather** is likely to prevail over Tamil Nadu, Puducherry & Karaikal during 07th-09th July.

Fishermen Warnings:

Fishermen are advised to avoid venturing into the following from 07th July to 12th July 2025 to the following Areas:

Arabian Sea:

central & adjoining north, south Arabian Sea; north Arabian Sea along and off Gujarat, Konkan, Goa, Karnataka coasts and adjoining sea; along and off the Somalia coast and adjoining sea areas, Oman and adjoining Yemen coast & adjoining sea areas during day 1 to day 5 (07th to 12th July).

Bay of Bengal:

Along and off north Andhra Pradesh coast for day 1 to day 3 (07th & 11th July); north & westcentral Bay of Bengal along and off Odisha, West Bengal coasts for day 1 & day 2 (07th & 08th July); most parts of westcentral Bay of Bengal and adjoining areas of eastcentral and southwest Bay of Bengal for day 1 (07th July), Over Gulf of Mannar for day 1 to day 3 & day 5 (07th, 08th, 09th & 11th July).

Total suspension of fishing operations is suggested over above mentioned areas and dates.

ii. Weather conditions and forecast over Delhi/NCR during 07th to 10th July, 2025 (Annexure IV)

For more details, kindly refer National Weather Bulletin:

https://mausam.imd.gov.in/responsive/all_india_forecast_bulletin.php

For District wise warnings refer: <https://mausam.imd.gov.in/responsive/districtWiseWarningGIS.php>

Rainfall Recorded (In cm) During Past 24 Hours Till 0830 Hours IST of Today, The 07th July:

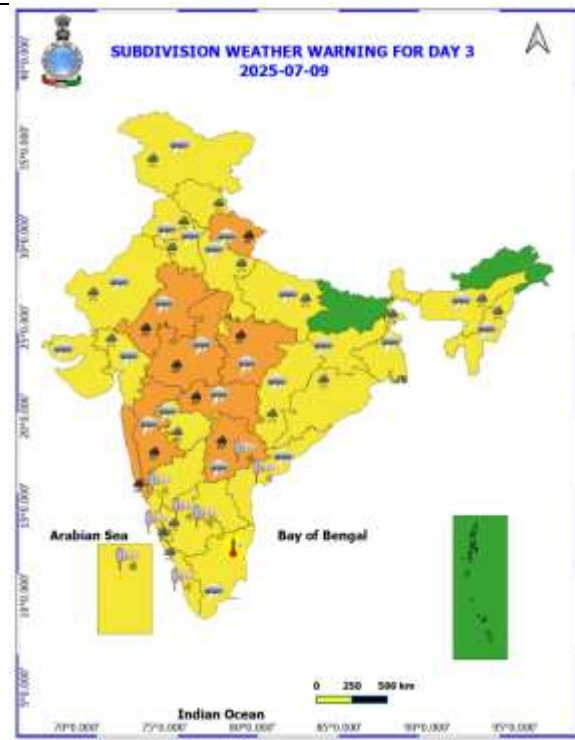
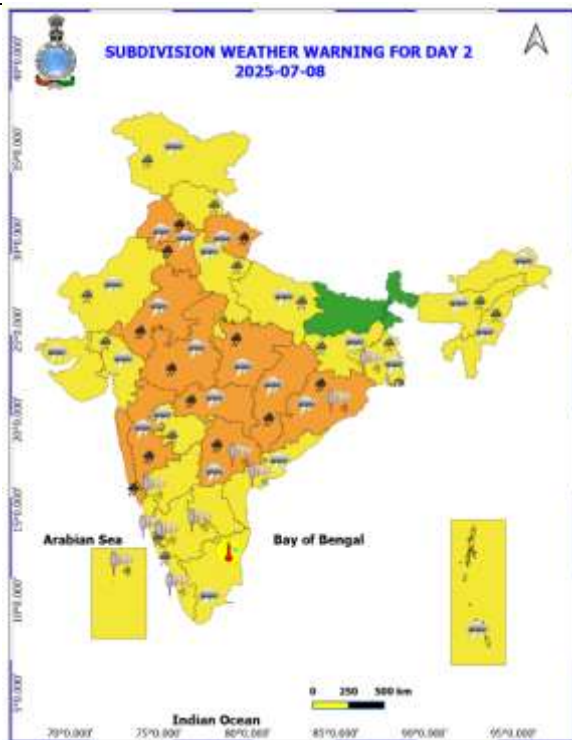
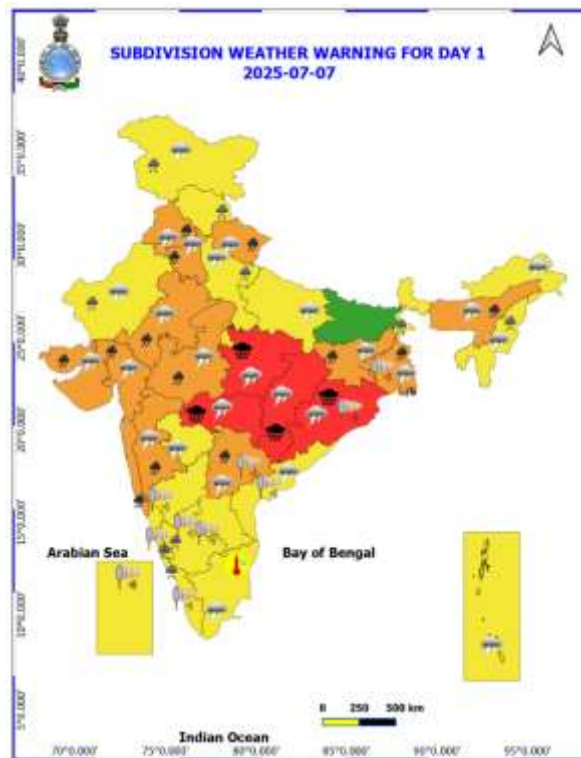
- ❖ **Chhattisgarh:** Pali (dist Korba) 26; Belgahna (dist Bilaspur) 16; Masturi (dist Bilaspur) 14; Bilha (dist Bilaspur) 13; Mungeli (dist Mungeli) 12; Janjgir (dist Janjgir), Pamgarh (dist Janjgir), Lormi (dist Mungeli), Ratanpur (dist Bilaspur) 10 Each; Baloda Bazar (dist Baloda Bazar), Tokapal (dist Bastar), Pachpedi (dist Bilaspur), Lalpur Thana (dist Mungeli) 9 Each; Kota (dist Bilaspur), Mohla (dist Mohala Manpur Chowki), Ramanujnagar (dist Surajpur), Chando (dist Balrampur), Darri (dist Korba), Pipariya (dist Kabirdham), Sakri (dist Bilaspur) 8 Each; Manendragarh (dist Manendragarh Bharatpur), Pallari/Palari (dist Baloda Bazar), Raipur (dist Raipur), Simga (dist Baloda Bazar), Rajnandgaon (dist Rajnandgaon), Akaltara (dist Janjgir), Pithora (dist Mahasamund), Patharia (dist Mungeli), Labhandih (dist Raipur), Hardibazar (dist Korba), Kukdur (dist Kabirdham), Saragaon (dist Janjgir), Dadhi (dist Bemetara), Raipur City (dist Raipur) 7 Each;
- ❖ **East Madhya Pradesh:** Bichhia (dist Mandla) 21; Waraseoni (dist Balaghat), Matiyari (dist Mandla) 15 Each; Balaghat-aws (dist Balaghat), Shahdole(sohagpur) (dist Shahdol), Dhanora (dist Seoni) 14 Each; Nainpur (dist Mandla), Pali (dist Umaria), Sleemanabad (dist Katni), Ghughri (dist Mandla) 13 Each; Manpur (dist Umaria), Chandia (dist Umaria), Bilaspur (dist Umaria) 12 Each
- ❖ **Madhya Maharashtra:** Igatpuri (dist Nashik) 17; Trimbakshwar (dist Nashik) 13; LonaVala ARG (dist Pune) 11; Radhanagari (dist Kolhapur) 9; Ozarkheda - Fmo (dist Nashik) 8; Mahabaleshwar (dist Satara), Peth (dist Nashik) 7 Each;
- ❖ **Odisha:** Samakhunta (dist Mayurbhanj) 17; Batli (dist Bargarh) 16; Balasore (dist Balasore) 15; Th Rampur (dist Kalahandi) 11; Atabira (dist Bargarh), Muruda (dist Mayurbhanj) 10 Each; Hirakud (dist Sambalpur), Burla (dist Sambalpur), Remuna (dist Balasore), Baripada (dist Mayurbhanj), Jaipur (dist Balasore), Ambabhona (dist Bargarh) 9 Each; Bargarh (dist Bargarh) 8; Nilgiri (dist Balasore), Betanati (dist Mayurbhanj), Rasagovindapur (dist Mayurbhanj) 7 Each;
- ❖ **Uttarakhand:** Loharkhet (dist Bageshwar) 17; Sama (dist Bageshwar) 12; Tehri (dist Garhwal Tehri) 8;
- ❖ **Saurashtra:** Bhuj (dist Kutch) 15; Nakhatrana (dist Kutch) 13; Vallabhipur (dist Bhavnagar) 11; Mandvi(k) (dist Kutch), Kandla Airport (dist Kutch) 7 Each;
- ❖ **West Uttar Pradesh:** Moradabad (dist Moradabad), Kasganj (dist Kasganj) 15 Each; Aligarh (dist Aligarh) 12; Sambhal (dist Sambhal) 9; Kasba Tanda (dist Rampur), Rath (dist Hamirpur), Sikandra Rao (dist Hathras) 8 Each; Khurja (dist Bulandshahar) 7;
- ❖ **Gujarat Region:** Dolvan (dist Tapi) 13; Subir (dist Dangs) 12; Bardoli (dist Surat), Balasinor (dist Mahisagar), Palsana (dist Surat) 9 Each; Waghai (dist Dangs), Khanvel (dist Dadara & Nagar Haveli), Vansda (dist Navsari), Dangs (ahwa) (dist Dangs) 8 Each; Vagra (dist Bharuch), Surat City (dist Surat), Meghraj (dist Aravalli), Ukai (dist Surat) 7 Each;
- ❖ **East Rajasthan:** Rajgarh (dist Alwar), Sikrai (dist Dausa) 13 Each; Todabhim (dist Karauli) 12; Mahwa (dist Dausa) 11; Udaipur-wati (dist Jhunjhunu) 9; Viratnagar SR (dist Jaipur), Sallopat SR (dist Banswara), Alwar SR (dist Alwar) 7 Each;
- ❖ **Haryana:** Ateli (dist Mahendragarh), Bhadra REV (dist Charkhi Dadri) 13 Each; Revenue Office AWS (dist Charkhi Dadri) 10; Najafgarh AWS (dist South West Delhi), Dhansa (dist South West Delhi) 9 Each; Narnaul (dist Mahendragarh), Uklana Rly (dist Hisar), Nagina REV (dist Nuh) 8 Each; Dadri (dist Charkhi Dadri) 7;
- ❖ **Jharkhand:** Kumardungi (dist West Singhbhum) 12; Panchet (dist Dhanbad) 10; Herhanj (dist Latehar) 7;
- ❖ **Konkan:** Vikramgad (dist Palghar) 11; Jawhar (dist Palghar) 10; Matheran (dist Raigad), Murbad (dist Thane), Wada (dist Palghar) 9 Each; Shahapur (dist Thane) 8; Bhiwandi (dist Thane), Palghar ARG (dist Palghar) 7 Each;
- ❖ **West Madhya Pradesh:** Jawar (dist Sehore) 9; Sabalgarh (dist Morena), Aron (dist Guna), Sohagpur (dist Narmadapuram), Khaniyadana (dist Shivpuri), Bankhedi (dist Narmadapuram) 8 Each;
- ❖ **Coastal Karnataka:** Manki (dist Uttara Kannada) 8; Yellapur (dist Uttara Kannada) 7;
- ❖ **South Interior Karnataka:** Bhagamandala (dist Kodagu) 8; Kammardi (dist Chikkamagaluru) 7;
- ❖ **Kerala & Mahe:** Peringome AWS (dist Cannur) 8; Tellichery (dist Cannur) 7;
- ❖ **Vidarbha:** Gondia AP (dist Gondia) 8; Gondia (dist Gondia), Tirora (dist Gondia) 7 Each; **Punjab:** Bharatgarh (dist Rupnagar), Ganguwal (dist Rupnagar) 8 Each;
- ❖ **Gangetic West Bengal:** Purulia (dist Purulia) 7;
- ❖ **Sub Himalayan West Bengal:** Jhallong (dist Kalimpong) 7.

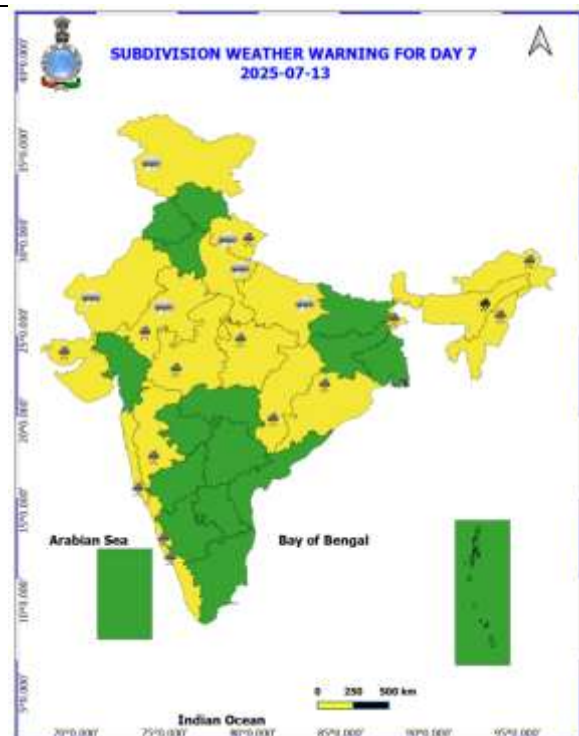
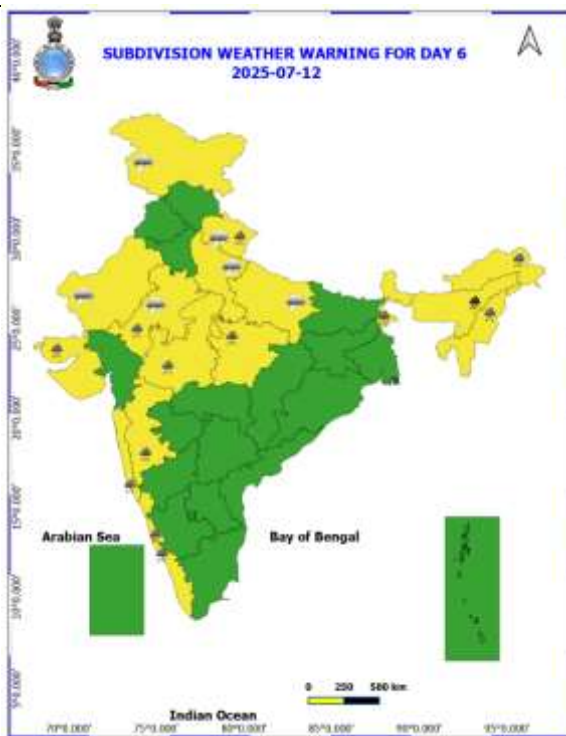
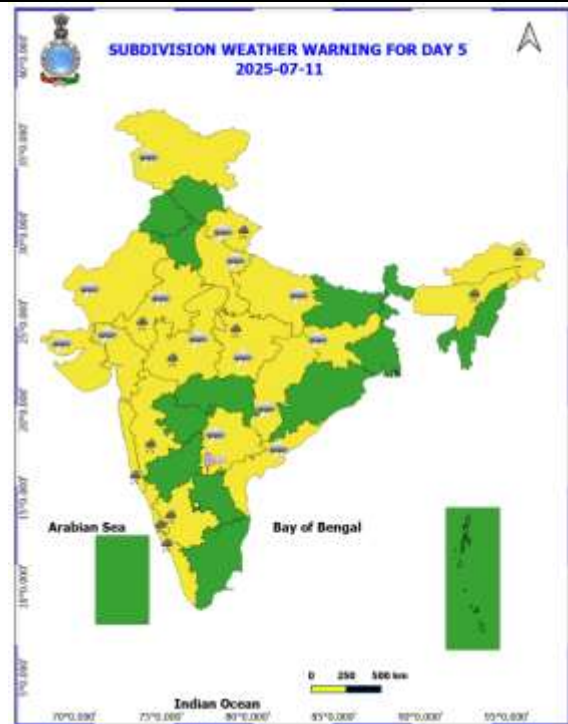
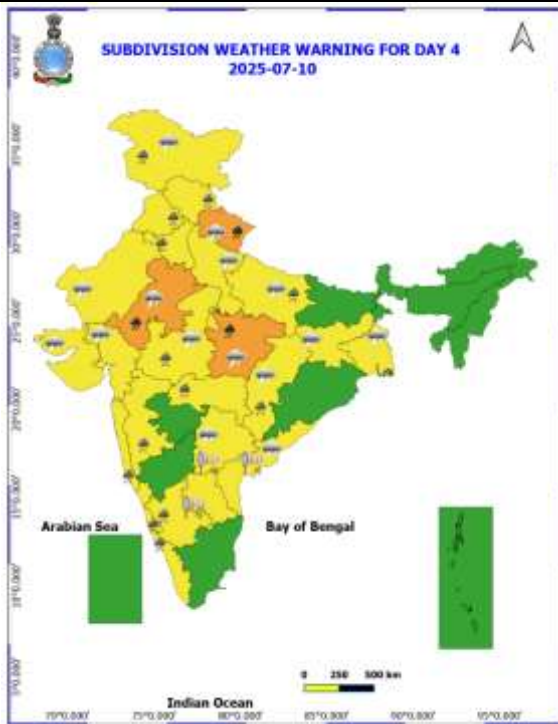
Realised Gusty Winds (kmph) During Past 24hours ending at 0830 hrs IST of today the 07th July:

- ❖ **Madhya Maharashtra:** Karad (Satara) 61, Mahabaleshwar (Satara) 57, Baramati (Pune) 57, Lavasa (Pune) 57;
- ❖ **Saurashtra & Kutch:** Dhari Amreli) 55;
- ❖ **West Uttar Pradesh:** Bulandshahar 50;
- ❖ **Marathwada:** Parbhani 48, Tulga (Dharashiv) 44;
- ❖ **Andaman & Nicobar Islands:** Sri Vijayapuram 45; Hut Bay 31; Nimbutala 30;
- ❖ **Himachal Pradesh:** Seobagh 44, Bajaura 43, Kufri 39, Shimla 37;
- ❖ **East Madhya Pradesh:** Sagar 44;
- ❖ **West Madhya Pradesh:** Sehore, Ujjain, Guna 43;
- ❖ **Konkan:** Mumbai (Santa Cruz) 41

Table-1								
7 Days Rainfall Forecast								
S.No.	Subdivision	7- Jul	8- Jul	9- Jul	10- Jul	11- Jul	12- Jul	13- Jul
		Day 1	Day 2	Day 3	Day 4	Day 5	Day 6	Day 7
1	ANDAMAN & NICOBAR ISLANDS	FWS	FWS	FWS	WS	WS	WS	WS
2	ARUNACHAL PRADESH	SCT	SCT	SCT	SCT	SCT	FWS	FWS
3	ASSAM & MEHGHALAYA	FWS	FWS	SCT	SCT	SCT	FWS	WS
4	NAGALAND, MANIPUR, MIZORAM AND TRIPURA	FWS	FWS	FWS	SCT	SCT	FWS	FWS
5	SUB HIMALAYAN WEST BENGAL & SIKKIM	FWS	FWS	WS	FWS	SCT	FWS	WS
6	GANGETIC WEST BENGAL	WS	WS	FWS	SCT	SCT	FWS	FWS
7	ODISHA	WS	FWS	FWS	SCT	SCT	FWS	FWS
8	JHARKHAND	WS	WS	FWS	SCT	SCT	FWS	FWS
9	BIHAR	ISOL	ISOL	SCT	SCT	SCT	SCT	FWS
10	EAST UTTAR PRADESH	ISOL	SCT	SCT	SCT	SCT	SCT	SCT
11	WEST UTTAR PRADESH	FWS	FWS	FWS	SCT	SCT	SCT	SCT
12	UTTARAKHAND	WS	WS	WS	WS	FWS	FWS	FWS
13	HARYANA, CHANDIGARH & DELHI	FWS	WS	FWS	SCT	SCT	ISOL	ISOL
14	PUNJAB	FWS	WS	FWS	SCT	SCT	ISOL	ISOL
15	HIMACHAL PRADESH	FWS	FWS	FWS	FWS	SCT	SCT	SCT
16	JAMMU AND KASHMIR AND LADAKH	FWS	FWS	FWS	FWS	SCT	SCT	SCT
17	WEST RAJASTHAN	ISOL	ISOL	ISOL	ISOL	SCT	SCT	SCT
18	EAST RAJASTHAN	FWS	FWS	FWS	WS	WS	FWS	FWS
19	WEST MADHYA PRADESH	WS	WS	WS	WS	WS	FWS	FWS
20	EAST MADHYA PRADESH	WS	WS	WS	WS	WS	FWS	FWS
21	GUJRAT REGION	WS	WS	WS	FWS	FWS	FWS	FWS
22	SAURASHTRA & KUTCH	WS	WS	FWS	FWS	FWS	FWS	FWS
23	KONKAN & GOA	WS	WS	WS	WS	WS	WS	WS
24	MADHYA MAHARASHTRA	FWS	FWS	FWS	SCT	SCT	ISOL	ISOL
25	MARATHWADA	FWS	FWS	FWS	ISOL	ISOL	ISOL	ISOL
26	VIDARBHA	WS	WS	WS	WS	FWS	FWS	FWS
27	CHHATTISGARH	WS	WS	FWS	SCT	SCT	FWS	FWS
28	COASTAL ANDHRA PRADESH	SCT	ISOL	ISOL	ISOL	ISOL	ISOL	ISOL
29	TELANGANA	FWS	FWS	FWS	SCT	SCT	SCT	SCT
30	RAYALASEEMA	ISOL	ISOL	ISOL	ISOL	ISOL	ISOL	ISOL
31	TAMILNADU & PUDUCHERRY	ISOL	ISOL	ISOL	ISOL	ISOL	SCT	SCT
32	COSTAL KARNATAKA	WS	WS	WS	WS	WS	WS	WS
33	NORTH INTERIOR KARNATAKA	SCT	SCT	ISOL	ISOL	ISOL	ISOL	ISOL
34	SOUTH INTERIOR KARNATAKA	SCT	SCT	SCT	SCT	SCT	SCT	SCT
35	KERALA AND MAHE	FWS	FWS	WS	WS	WS	WS	WS
36	LAKSHADWEEP	FWS	FWS	FWS	FWS	FWS	FWS	FWS

- As the lead period increases forecast accuracy decrease





- Action may be taken based on ORANGE AND REDCOLOUR warnings.
- Vulnerable regions likely urban and hilly areas action may be initiated for heavy rainfall warning.
- As the lead period increases forecast accuracy decreases.

Detailed districtwise MultiHazard weather warning for next five days available at
<https://mausam.imd.gov.in/responsive/districtWiseWarningGIS.php>

Weather forecast over Delhi/NCR during 07th to 10th July 2025**Past Weather:**

There has been fall in the minimum temperature up to 4 to 6°C and fall in maximum temperature up to 2 to 3°C over Delhi/NCR during the past 24 hours. The maximum and minimum temperatures over Delhi were around 33 to 35 °C and 22 to 24 °C respectively. The minimum temperatures were below normal up to 2 to 5°C and the maximum temperatures were below normal up to 2 to 4°C. Generally cloudy sky conditions with predominant surface wind from the southeast/southwest direction with wind speeds up to 16 kmph prevailed during the past 24 hours. Light to moderate rainfall has been recorded in most parts of Delhi, with isolated places experiencing heavy rainfall. Generally cloudy sky conditions with a windspeed of less than 12 kmph from the southwest direction prevailed over the region in the forenoon today.

Weather Forecast:

07.07.2025: Generally cloudy sky. Light to Moderate rain accompanied by thunderstorms/lightning. The maximum temperatures over Delhi are likely to be in the range of 31 to 33°C. The maximum temperature will be below normal by up to 4 to 6°C. The predominant surface wind will likely be from the south west direction with a wind speed of less than 15 kmph in the afternoon. The wind speed will gradually decrease becoming 08-12 kmph from the southeast direction during evening and night.

08.07.2025: Generally cloudy sky. Light to moderate rain accompanied by thunderstorms/lightning. The maximum and minimum temperatures over Delhi are likely to be in the range of 32 to 34°C and 23 to 25°C, respectively. The minimum temperature will be below normal up to 1 to 3°C and the maximum temperature will be below normal by up to 2 to 4°C. The predominant surface wind will likely be from the southwest direction with a wind speed of less than 15 kmph during the morning hours. The wind speed will gradually decrease becoming less than 12 kmph from the northwest direction in the afternoon. It will increase to less than 20 kmph from the northwest direction during the evening and night.

09.07.2025: Generally cloudy sky. Light to moderate rain accompanied by thunderstorms/lightning. The maximum and minimum temperatures over Delhi are likely to be in the range of 31 to 33°C and 24 to 26°C, respectively. The minimum temperature will be below normal up to 1 to 2°C, and the maximum temperature will be below normal up to 3 to 5°C. The predominant surface wind will likely be from the northeast direction with a wind speed of less than 10 kmph during the morning hours. The wind speed will gradually increase becoming less than 20 kmph from the east direction in the afternoon. It will decrease to less than 15 kmph from the east direction during the evening and night.

10.07.2025: Generally cloudy sky. Very light to light rain accompanied by thunderstorms/lightning. The maximum and minimum temperatures over Delhi are likely to be in the range of 32 to 34°C and 24 to 26°C, respectively. The minimum temperature will be below normal up to 1 to 2 °C, and the maximum temperature will be below normal up to 2 to 4°C. The predominant surface wind will likely be from the southeast direction with a wind speed of less than 15 kmph during the morning hours. The wind speed will gradually decrease becoming less than 12 kmph from the southeast direction in the afternoon. It will decrease to less than 10 kmph from the east direction during the evening and night.

Impact expected and Action Suggested due to thunderstorm with lightning:

- Be cautious and take precautionary measures, though there is the likelihood of thunderstorm/lightning.
- Damage to standing crops, Minor to major damage to power and communication lines due to breaking of branches, Partial damage to vulnerable structures due to strong winds, Loose objects may fly.
- People are advised to keep a watch on the weather for worsening conditions and be ready to move to safer places accordingly, stay indoors, close windows & doors and avoid travel if possible, take safe shelters; do not take shelter under trees, do not lie on concrete floors and do not lean against concrete walls, unplug electrical/ electronic appliances, immediately get out of water bodies, keep away from all the objects that conduct electricity.

Impact & Action Suggested

- ✓ **Extremely heavy rainfall (≥ 21 cm)** very likely at isolated places over East Madhya Pradesh, Chhattisgarh and Vidarbha on 07th July.
- ✓ **very heavy rainfall** over Madhya Pradesh, Uttarakhand, East Rajasthan, Konkan, Madhya Maharashtra during 07th-10th; Gangetic West Bengal, Jharkhand, Meghalaya on 07th and Odisha on 07th & 08th; Vidarbha, Telangana on 08th & 09th; Chhattisgarh on 08th; Punjab, Haryana Chandigarh on 07th & 08th July.

Impact Expected

- Localized Flooding of roads, water logging in low lying areas and closure of underpasses mainly in urban areas of the above region.
- Occasional reduction in visibility due to heavy rainfall.
- Disruption of traffic in major cities due to water logging in roads leading to increased travel time.
- Minor damage to kutch roads.
- Possibilities of damage to vulnerable structure.
- Localized Landslides/Mudslides/landslides/mudslips/landsinks/mudsinks.
- Damage to horticulture and standing crops in some areas due to inundation.
- It may lead to riverine flooding in some river catchments (for riverine flooding please visit Web page of CWC)

Action Suggested

- Check for traffic congestion on your route before leaving for your destination.
- Follow any traffic advisories that are issued in this regard.
- Avoid going to areas that face the water logging problems often.
- Avoid staying in vulnerable structure.

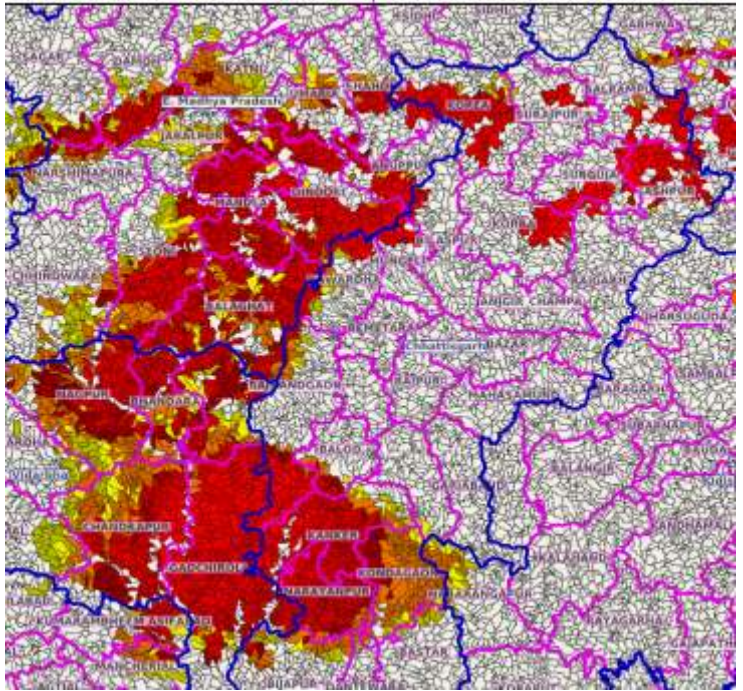
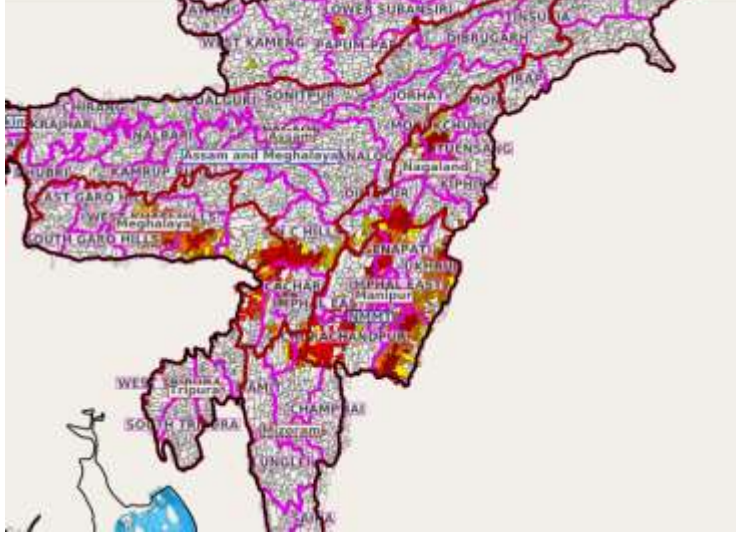
Agromet advisories for likely impact of Heavy / Heavy to Very Heavy / Extremely Heavy Rainfall

- In **East Madhya Pradesh**, postpone sowing of maize and soybean and transplanting of rice. Drain out excess water from rice nurseries and transplanted rice fields, fields of already sown maize and soybean. In **West Madhya Pradesh**, drain out excess water from fields of maize, soybean and vegetables and fruit orchards to avoid waterlogging. Postpone sowing of soybean in **Satpura Plateau Zone** and **Gird Zone** and sowing of rice nurseries in **Central Narmada Valley Zone**.
- In **Chhattisgarh**, ensure proper drainage in rice nurseries, fields of rice, maize, pigeon pea, minor millets and vegetables. Postpone line sowing / transplanting of rice and sowing of pigeon pea, maize and soybean in **Plain Zone** and sowing of pigeon pea in **North Hill Zone**.
- In **Uttarakhand**, ensure proper drainage facilities in soybean, maize, barnyard millet, finger millet, pigeon pea, kidney beans, vegetables and orchards. Harvest matured vegetables and fruits and store in safe place.
- In **Himachal Pradesh**, drain out excess water from the fields of maize and vegetables and fruit orchards. Harvest matured fruits and vegetables and store them in safer places. In **High Hills Sub Temperate Wet Zone**, postpone sowing of kidney beans and nursery sowing and transplanting of rice.
- In **East Rajasthan**, drain out excess water from the fields of cotton, soybean, groundnut and green gram. Postpone sowing of maize in **Southern Humid Plain Zone**, sowing or re-sowing of sesame, green gram and pearl millet in **Flood Prone Eastern Plain Zone** and sowing of green gram, cluster bean, pearl millet and sesame in **Sub Humid Southern Plain and Aravali Hill Zone** till cessation of heavy rainfall.
- In **Konkan**, make arrangement to drain out excess water from rice and finger millet nurseries, groundnut, vegetables and orchards. In **ghat areas of Madhya Maharashtra** drain out excess water from rice and finger millet nurseries. In **Vidarbha**, ensure proper drainage in *kharif* crops such as rice, soybean, cotton etc., vegetable nurseries and orchards.
- In **Gujarat region**, drain out excess water from rice nurseries, sugarcane fields, banana and mango plantations to prevent waterlogging. Provide support to sugarcane with strong bamboo or tie the leaves together to prevent lodging. In **Saurashtra & Kutch**, drain out excess water from fields of groundnut, soybean, cotton and vegetables and horticultural plantations. Undertake propping in sugarcane with strong bamboo or tie the leaves together in a clump to protect against wind and heavy rain.
- In **Odisha**, ensure proper drainage from already sown rice nurseries, fields of maize and vegetables to prevent waterlogging. Harvest matured vegetables and fruits and keep in safer places. In **West Central Table Land Zone**, postpone sowing of pigeon pea and groundnut. In case of poor germination / no germination in maize crop due to waterlogged condition, carry out re-sowing during favourable weather. In **Keonjhar** district, postpone sowing of maize.
- In **Gangetic West Bengal**, ensure proper drainage from rice, jute and vegetable fields. In **New Alluvial Zone**, harvest matured sesame and groundnut crop immediately and keep in safer places.
- In **Jharkhand**, make necessary arrangements to drain out excess water from maize fields, rice and vegetable nurseries. Cover the vegetable nurseries with polythene sheets.

Livestock / Fishery

- Keep the animals inside the shed during heavy rainfall and provide them balanced feed.
- Store feed and fodder in a safe place to prevent spoilage.
- Construct an outlet with proper netting around the ponds to drain out excess water, thereby preventing fish from escaping in case of overflow.

Flash flood guidance:

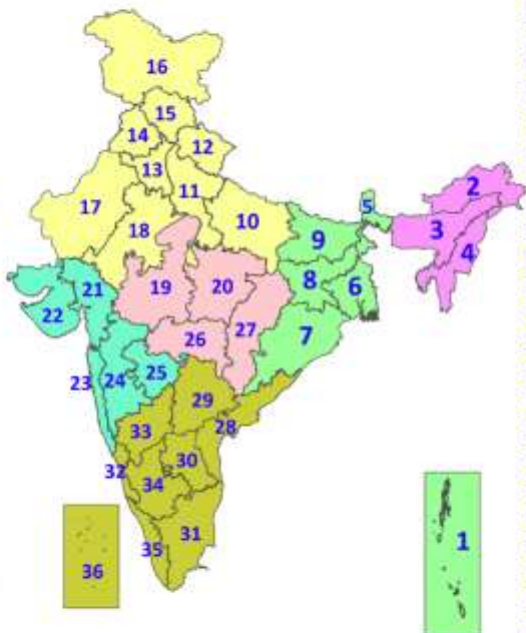
<p>24 hours Outlook for the Flash Flood Risk (FFR) till 1130 IST of 08-07-2025 :</p> <p>Moderate flash flood risk likely over few watersheds & neighbourhoods of following Met Sub-divisions during next 24 hours.</p> <p>Chhattisgarh - Balarampur, Balod, Bastar, Bijapur, Bilaspur, Jashpur, Kanker, Kondagaon, Korba, Korea, Mungeli, Narayanpur, Rajnandgaon, Surajpur and Surguja districts.</p> <p>East Madhya Pradesh - Anuppur, Balaghat, Chhindwara, Damoh, Dindori, Jabalpur, Katni, Mandla, Narshimpura, Sagar, Seoni, Shahdol and Umaria districts.</p> <p>Vidarbha - Bhandara, Chandrapur, Gadchiroli, Gondiya, Nagpur, Wardha and Yavatmal districts.</p> <p>Adjoining Telangana - Adilabad, Kumaram Bheem and Mancherial districts.</p> <p>Surface runoff/ Inundation may occur at some fully saturated soils & low-lying areas over Area of Concern (AoC) as shown in map due to expected rainfall occurrence in next 24 hours.</p>	<p>Product: GFS FFR Timescale: 24-hr Region: "REGIONAL"</p> <p>Product Date: 2025-07-07 06:00 UTC Valid Date: 2025-07-08 06:00 UTC</p> 
<p>24 hours Outlook for the Flash Flood Risk (FFR) till 1130 IST of 08-07-2025 :</p> <p>Low to Moderate flash flood risk likely over few watersheds & neighbourhoods of following Met Sub-divisions during next 24 hours.</p> <p>Assam & Meghalaya - Cachar, N.C Hills, East Khasi Hills, West Khasi Hills and Jaintia Hills districts.</p> <p>Nagaland Mizoram Manipur Tripura (NMMT) -</p> <p>Manipur- Bishnupur, Chandel, Churachandpur, Imphal East, Imphal West, Senapati, Tamenglong, Thoubal, Ukhrul,</p> <p>Mizoram- Aizawl, Kolasib,</p> <p>Nagaland- Dimapur, Kiphire, Kohima, Longleng, Mokokchung and Wokha districts.</p> <p>Surface runoff/ Inundation may occur at some fully saturated soils & low-lying areas over Area of Concern (AoC) as shown in map due to expected rainfall occurrence in next 24 hours.</p>	<p>Product: GFS FFR Timescale: 24-hr Region: "INDIA"</p> <p>Product Date: 2025-07-07 06:00 UTC Valid Date: 2025-07-08 06:00 UTC</p> 

Legends & abbreviations:

- ❖ **Heavy Rain:** 64.5-115.5mm; **Very Heavy Rain:** 115.6-204.4mm; **Extremely Heavy Rain:** >204.4mm.
- ❖ **Obsy:** Observatory; Automatic Weather Station; **ARG:** Automatic Rain Gauge; **dist:** District; **NH:** National Highway; **KVK:** Krishi Vigyan Kendra; **DVC:** Damodar Valley Corporation; **PTO:** Part Time Office, **Aero:** Aerodrome, **IAF:** Indian Air Force.
- ❖ **Region wise classification of meteorological Sub-Divisions:**
 - **Northwest India:** Western Himalayan Region (Jammu-Kashmir-Ladakh-Gilgit-Baltistan-Muzaffarabad, Himachal Pradesh and Uttarakhand); Punjab, Haryana-Chandigarh-Delhi; West Uttar Pradesh, East Uttar Pradesh, West Rajasthan and East Rajasthan.
 - **Central India:** West Madhya Pradesh, East Madhya Pradesh, Vidarbha and Chhattisgarh.
 - **East India:** Bihar, Jharkhand, Sub-Himalayan West Bengal & Sikkim; Gangetic West Bengal, Odisha and Andaman & Nicobar Islands.
 - **Northeast India:** Arunachal Pradesh, Assam & Meghalaya and Nagaland, Manipur, Mizoram & Tripura.
 - **West India:** Gujarat Region, Saurashtra & Kutch, Konkan & Goa, Madhya Maharashtra and Marathawada.
 - **South India:** Coastal Andhra Pradesh & Yanam, Telangana, Rayalaseema, Coastal Karnataka, North Interior Karnataka, South Interior Karnataka, Kerala & Mahe, Tamil Nadu, Puducherry & Karaikal and Lakshadweep.

LEGENDS

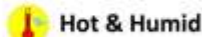
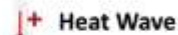
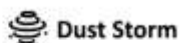
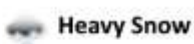
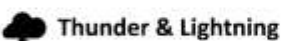
1. अंडमान और निकोबार द्वीपसमूह
2. अरुणाचल प्रदेश
3. असम और मेघालय
4. नागालैंड, मणिपुर, मिजोरम और त्रिपुरा
5. उप-हिमालयी पश्चिम बंगाल और सिक्किम
6. गंगीय पश्चिम बंगाल
7. ओडिशा
8. झारखंड
9. बिहार
10. पूर्वी उत्तर प्रदेश
11. पश्चिम उत्तर प्रदेश
12. उत्तराखंड
13. हरियाणा, चंडीगढ़ और दिल्ली
14. पंजाब
15. हिमाचल प्रदेश
16. जम्मू और कश्मीर और लद्दाख
17. पश्चिम राजस्थान
18. पूर्वी राजस्थान
19. पश्चिम मध्य प्रदेश
20. पूर्वी मध्य प्रदेश
21. गुजरात
22. सौराष्ट्र
23. कोंकण और गोवा
24. मध्य महाराष्ट्र
25. मराठवाड़ा
26. विदर्भ
27. छत्तीसगढ़
28. तटीय आंध्र प्रदेश और यनम
29. तेलंगाना
30. रायलसीमा
31. तमिलनाडु, पुडुचेरी और कराईकल
32. तटीय कर्नाटक
33. आंतरिक उत्तरी कर्नाटक
34. आंतरिक दक्षिणी कर्नाटक
35. केरल और माहे
36. लक्षद्वीप



1. Andaman & Nicobar Islands
2. Arunachal Pradesh
3. Assam & Meghalaya
4. Nagaland, Manipur, Mizoram & Tripura
5. Sub-Himalayan West Bengal & Sikkim
6. Gangetic West Bengal
7. Odisha
8. Jharkhand
9. Bihar
10. East Uttar Pradesh
11. West Uttar Pradesh
12. Uttarakhand
13. Haryana, Chandigarh & Delhi
14. Punjab
15. Himachal Pradesh
16. Jammu & Kashmir and Ladakh
17. West Rajasthan
18. East Rajasthan
19. West Madhya Pradesh
20. East Madhya Pradesh
21. Gujarat
22. Saurashtra
23. Konkan & Goa
24. Madhya Maharashtra
25. Marathwada
26. Vidarbha
27. Chhattisgarh
28. Coastal Andhra Pradesh & Yanam
29. Telangana
30. Rayalaseema
31. Tamilnadu, Puducherry & Karaikal
32. Coastal Karnataka
33. North Interior Karnataka
34. South Interior Karnataka
35. Kerala & Mahe
36. Lakshadweep

SPATIAL DISTRIBUTION (% of Stations reporting)

% Stations	Category	% Stations	Category
76-100	Widespread (WS/Most Places)	26-50	Scattered (SCT/A Few Places)
51-75	Fairly Widespread (FWS/Many Places)	1-25	Isolated (ISOL)



COLOUR CODED WARNING

No Warning (No Action)
Watch (Be Aware)
Alert (Be Prepared To Take Action)
Warning (Take Action)

Probabilistic Forecast

Terms	Probability of Occurrence (%)
Unlikely	< 25
Likely	25 - 50
Very Likely	50 - 75
Most Likely	> 75

* Red colour warning does not mean "Red Alert", Red colour warning means "Take Action".

Forecast and Warning for any day is valid from 0830 hours IST of day till 0830 hours IST of next day.

For more details, kindly visit <https://mausam.imd.gov.in> or contact: 011-2434-4599

(Service to the Nation since 1875)

DEFINITION/CRITERIA

Rain/ Snow *

Heavy: 64.5 to 115.5 mm/cm *
Very Heavy: 115.6 to 204.4 mm/cm *
Extremely Heavy: > 204.4 mm/cm *

Heat Wave

When maximum temperature of a station reaches $\geq 40^{\circ}\text{C}$ for plains and $\geq 30^{\circ}\text{C}$ for hilly regions
(a) Based on Departure from normal

Heat Wave: Maximum Temperature Departure from normal 4.5°C to 6.4°C .

Severe Heat Wave: Maximum Temperature Departure from normal $\geq 6.5^{\circ}\text{C}$

(b). Based on Actual maximum temperature

Heat Wave: When actual maximum temperature $\geq 45^{\circ}\text{C}$.

Severe Heat Wave: When actual maximum temperature $\geq 47^{\circ}\text{C}$.

(c). Criteria for heat wave for coastal stations

When maximum temperature departure is $> 4.5^{\circ}\text{C}$ from normal. Heat Wave may be described provided maximum temperature $\geq 37^{\circ}\text{C}$.

Warm Night

When maximum temperature remains 40°C

Warm Night: When minimum temperature departure 4.5°C to 6.4°C .

Severe Warm Night: When minimum temperature departure $> 6.4^{\circ}\text{C}$.

Cold Wave

When minimum temperature of a station $\leq 10^{\circ}\text{C}$ for plains and $\leq 0^{\circ}\text{C}$ for hilly regions.
(a). Based on departure

Cold Wave: Minimum Temperature Departure from normal -4.5°C to -6.4°C .

Severe Cold Wave: Minimum Temperature Departure from normal $\leq -6.5^{\circ}\text{C}$

(b) Based on actual Minimum Temperature (for Plains only)

Cold Wave: When Minimum Temperature is $\leq 4.0^{\circ}\text{C}$

Severe Cold Wave: When Minimum Temperature is $\leq 2.0^{\circ}\text{C}$

(c) For Coastal Stations

When Minimum Temperature departure is $\leq -4.5^{\circ}\text{C}$ & actual Minimum Temperature is $\leq 15^{\circ}\text{C}$

Cold Day

When minimum temperature of a station $\leq 10^{\circ}\text{C}$ for plains and $\leq 0^{\circ}\text{C}$ for hilly regions
Based on departure

Cold Day: Maximum Temperature Departure from normal -4.5°C to -6.4°C .

Severe Cold Day: Maximum Temperature Departure from normal $\leq -6.5^{\circ}\text{C}$

Fog

Phenomenon of small droplets suspended in air and the horizontal visibility $< 1\text{km}$

Moderate Fog: When the visibility between 500-200 metres

Dense Fog: when the visibility between 50- 200 metres

Very Dense Fog: when the visibility < 50 metres

Thunderstorm

Sudden electrical discharges manifested by a flash of light (Lightning) and a sharp rumbling sound (thunder)

Dust/Sand Storm

An ensemble of particles of dust or sand energetically lifted to great heights by a strong and turbulent wind.

Frost

Ice deposits on ground

Air temperature $\leq 4^{\circ}\text{C}$ (over Plains)

Squall

A strong wind that rises suddenly, lasts for atleast 1 minute.

Moderate: Wind speed 52-61 kmph

Severe: Wind speed 62-87 kmph

Very Severe: Wind speed > 87 kmph

Sea State

Effect of various waves in the sea over specific area

Rough to very rough: Wind speed 41-62 kmph (22-33 knots) & Wave height 2.5-6 metre

High to very high: Wind speed 63-117 kmph (34-63 knots) & Wave height 6-14 metre

Phenomenal: Wind speed > 117 kmph (> 63 knots) & Wave height > 14 metre

Cyclone

Cyclonic Storm: Wind speed 62-87 kmph (34-47 knots)

Severe Cyclonic Storm: Wind speed 88-117 kmph (48-63 knots)

Very Severe Cyclonic Storm: Wind speed 118-165 kmph (64 - 89 knots)

Extremely Severe Cyclonic Storm: Wind speed 166-220 kmph (90 -119 knots)

Super Cyclone Storm: Wind speed > 220 kmph (> 119 knots)

* Red colour warning does not mean "Red Alert", Red colour warning means "Take Action".

Forecast and Warning for any day is valid from 0830 hours IST of day till 0830 hours IST of next day.

For more details, kindly visit <https://mausam.imd.gov.in> or contact: 011-2434-4599

(Service to the Nation since 1875)

Hot and Humid: When maximum temperatures remain 3°C above normal along with the above normal relative humidity.